

2025 INTRAMURAL EMORY

# GLOBAL HEALTH CASE COMPETITION

Longing for Belonging:  
Addressing the Loneliness Epidemic in the United States



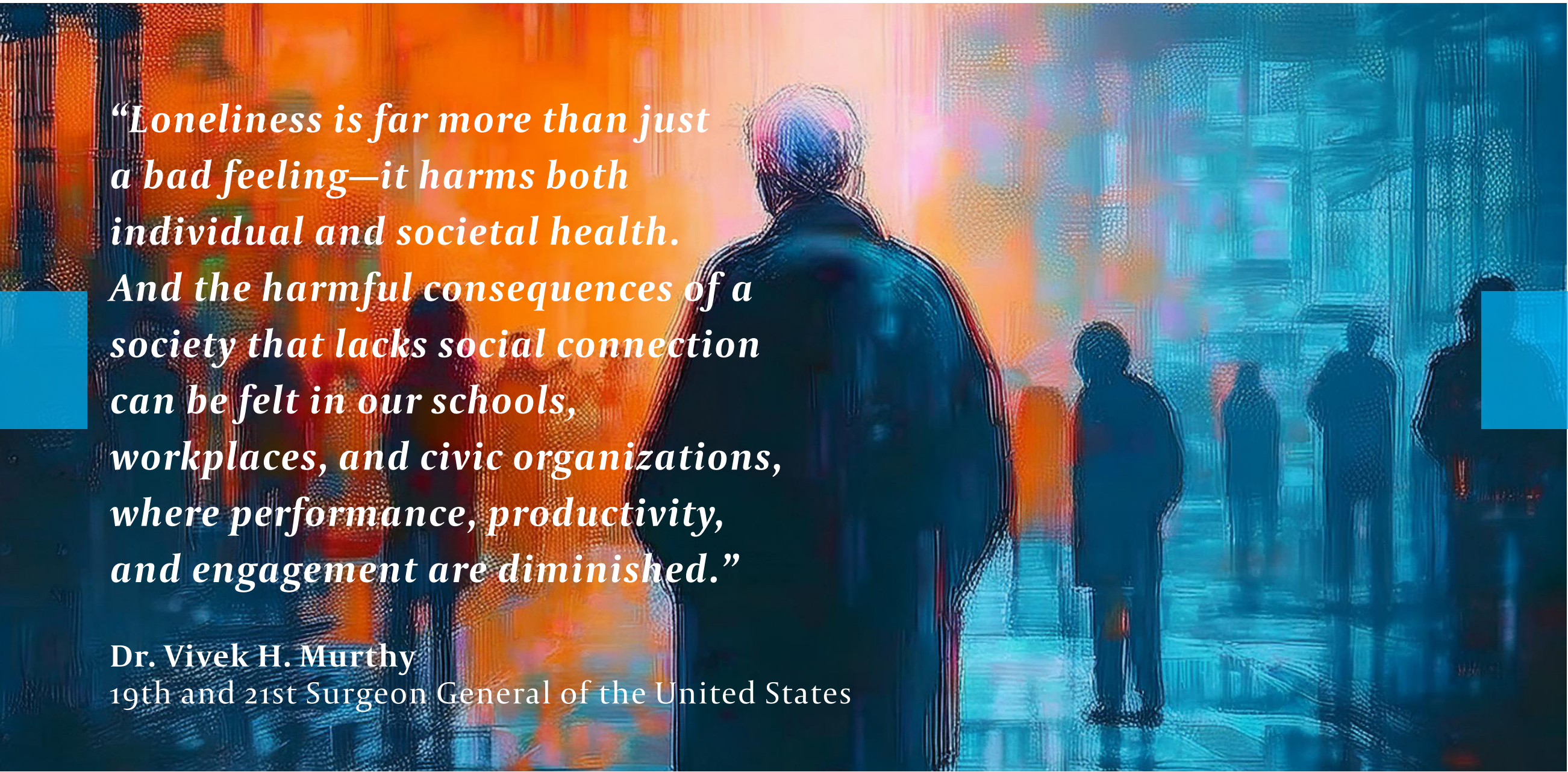
EMORY  
UNIVERSITY

Emory Global Health Institute



# AGENDA

## Claudia Nance Rollins (CNR) Building



*“Loneliness is far more than just a bad feeling—it harms both individual and societal health. And the harmful consequences of a society that lacks social connection can be felt in our schools, workplaces, and civic organizations, where performance, productivity, and engagement are diminished.”*

Dr. Vivek H. Murthy  
19th and 21st Surgeon General of the United States

### Saturday, February 1, 2025

**7:30 AM**  
**Breakfast & Team Check-In**  
CNR Lobby

**8:45 AM**  
**Welcome & Opening**  
CNR Auditorium

**9:00 AM**  
**Presentations: Round 1**  
CNR Stream Rooms

**10:45 AM**  
**Judges Deliberations & Refreshments**  
CNR Lobby

**11:45 AM**  
**Announcement of Finalists**  
CNR Auditorium

**12:00 PM**  
**Feedback & Case Twist**  
CNR Stream Rooms

**1:15 PM**  
**Final Presentations**  
CNR Auditorium

**2:30 - 3:15 PM**  
**Reception & Announcement of Winners**  
Klamon Room, 8<sup>th</sup> Floor

**8:00 AM**  
**Judges’ Briefing**

**Welcome to Emory Global Health Institute’s 17<sup>th</sup> Intramural Emory Global Health Case Competition.**

Globally, loneliness among different age groups is a growing concern. Despite cultural and structural differences, many nations grapple with similar challenges in addressing loneliness and its associated health impacts. This shared crisis presents a unique opportunity for international collaboration and learning. The call to action is clear: coordinated, evidence-based solutions are urgently needed to address this growing public health threat and mitigate its adverse impacts on individuals, communities, and healthcare systems.

We wish all students participating in this challenge a meaningful experience and thank our judges, case advisors, volunteers, and sponsors.

**2:30 PM**  
**Judges’ Deliberations**



# TEAMS

## Intramural Emory Student Teams

\* Team Captain

### TEAM 1

**Tejaswini Agarwal**  
*Rollins School of Public Health*

**Valentina Larrivey\***  
*School of Medicine*

**Oliver Hegyi**  
*Oxford College*

**Hashim Chaudhry**  
*Oxford College*

**Jonas Pfefferman**  
*Oxford College*

**Saketh Sankara**  
*Rollins School of Public Health*

### TEAM 2

**Lyvannak Sam**  
*Rollins School of Public Health*

**Chadwick Medeiros**  
*Rollins School of Public Health*

**Tasmiah Tahera Aziz\***  
*Rollins School of Public Health*

**Dauphine Ayebale**  
*Rollins School of Public Health*

**Tracy He**  
*Emory College of Arts & Sciences*

**Jocelyn Nguyen**  
*Goizueta Business School*

### TEAM 3

**Alexis Ziller\***  
*Rollins School of Public Health*

**Gabi Olmedo**  
*Rollins School of Public Health*

**Tran Nguyen**  
*Rollins School of Public Health*

**Maya Jackson**  
*Rollins School of Public Health*

**Jenna Gevertz**  
*Goizueta Business School*

**Melissa Irek**  
*Rollins School of Public Health & School of Medicine*

### TEAM 4

**Selina Kao**  
*Emory College of Arts & Sciences*

**Briella Lucadamo**  
*Emory College of Arts & Sciences*

**Ted Zhang\***  
*Goizueta Business School*

**Raghav Agarwalla**  
*Emory College of Arts & Sciences*

**Addison Deisher**  
*Rollins School of Public Health*

**Samhitha Dasari**  
*Rollins School of Public Health*

### TEAM 5

**Sarah Timbie\***  
*Rollins School of Public Health*

**Jade Bondy**  
*Rollins School of Public Health*

**Gabrielle Gershon**  
*School of Medicine*

**Sofie Jubelirer**  
*Emory College of Arts & Sciences*

**Pooja Sanghvi**  
*Emory College of Arts & Sciences*

**Jillian Wu**  
*Goizueta Business School*

## Thank You to Our Case Advisors!

**Benn R. Konsynski, PhD**

**Helen Baker, PhD, MSc, FNP-BC**

**Jessica Ham, PhD, MA**

**Sara Harlan Zegeye, MDP**

**Anna Quay-Yaffee, MD, MPH**

**Amel Omari, PhD, MPH**

**Carla Roncoli, PhD**

**Carol Rubin, DVM, MPH**

**Amandine Zoonekyndt-Ballart, MPH**



## TEAM 7

**Vikram Varadarajan\***  
*School of Medicine*

**Abhinav Vaidyanathan**  
*Rollins School of Public Health*

**Lin Yeh**  
*Goizueta Business School*

**SJ Ahn**  
*Goizueta Business School*

**Andrew Conlon**  
*Emory College of Arts & Sciences*

**Helen Ejigu**  
*Emory College of Arts & Sciences*

## TEAM 8

**Anvita Guttikonda**  
*Emory College of Arts & Sciences*

**Clara Cai**  
*Emory College of Arts & Sciences*

**Avery Uffelmann**  
*Oxford College*

**Tianran Wang**  
*Rollins School of Public Health*

**Meher Jain**  
*Goizueta Business School*

**Ana Camila Huber\***  
*Rollins School of Public Health*



## TEAM 9

**Danielle Merken\***  
*Laney Graduate School*

**Viraj Shivadevuni**  
*Oxford College*

**Vikram Srinivasan**  
*Oxford College*

**Karina Collins**  
*Rollins School of Public Health*

**Maedot Admassu**  
*Rollins School of Public Health*

**Sanika Mithbaokar**  
*Emory College of Arts & Sciences*

## TEAM 10

**Haley Cionfolo\***  
*Rollins School of Public Health*

**Neha Mokashi**  
*Rollins School of Public Health*

**Elisabeth Vogel**  
*Rollins School of Public Health*

**Madeline Chandler**  
*Candler School of Theology & Rollins School of Public Health*

**Lily Freeman**  
*Emory College of Arts & Sciences*

**Jenna Feeley**  
*Laney Graduate School*

## TEAM 11

**Epherata Zeleke**  
*Emory College of Arts & Sciences*

**Roshni Desai**  
*Rollins School of Public Health*

**Joseph Ali**  
*Rollins School of Public Health*

**Roaa Kordeir\***  
*Emory College of Arts & Sciences*

**Phuong Vu**  
*James T. Laney School of Graduate School*

**Endia James**  
*Emory College of Arts & Sciences*

## TEAM 12

**Ayana Isobe\***  
*Rollins School of Public Health*

**Timothy Odonga**  
*Laney Graduate School*

**Olanike Azeez**  
*Rollins School of Public Health*

**Merrve Ecan Celenk**  
*Rollins School of Public Health*

**Mai Terashima**  
*Goizueta Business School*

**Nashra Khan**  
*Emory College of Arts & Sciences*



# JUDGES

## 2025 Case Competition



Parul Parikh, JD, MPH

Centers for Disease  
Control and Prevention

**PARUL PARIKH** is the Acting Associate Director for Policy in the Division of Overdose Prevention at the CDC National Center for Injury Prevention and Control. She has been with CDC since 2015. Before coming to CDC, Parul was an Equal Opportunity Specialist with the HHS Office for Civil Rights, where she worked on civil rights compliance and health information privacy cases to support equitable access to health care. Parul earned her JD from Emory University and her MPH from Georgia State University.

**CHIKAKO OZAWA-DE SILVA** is a Professor of Japanese Studies and Anthropology at Emory University. She is a National Endowment for the Humanities grant recipient and a Mind and Life Contemplative Studies Fellowship recipient. Her academic vision is to contribute to cross-cultural understandings of health, illness and well-being by bringing Western and Asian perspectives on the mind-body, religion, medicine, and therapy into fruitful dialogue. For the past ten years her research has focused on loneliness, empathy, meaning-making, subjectivity, contemplative practice, and resilience in Japan and the U.S.



Chikako Ozawa-de Silva,  
DPhil

Emory University



Katherine V. Bruss, PsyD

Clinical Consultant

**KATHERINE V. BRUSS** is a licensed clinical psychologist and consultant who earned her doctoral degree from Baylor University and certificate in Global Mental Health Refugee Trauma at Harvard University and Istituto Superiore di Sanità. During her 30-year career, she has focused on promoting health and wellness initiatives and programs across the federal government, major universities, and non-profit organizations. At U.S. CDC, Dr. Bruss provided subject matter expertise in mental and social health and emotional well-being, regularly collaborating with leading researchers in loneliness and social isolation. She received an Excellence in Leadership Award as well as other recognitions during her tenure at CDC. She contributed to the development of the Surgeon General's Advisory on Social Connection and on measures of social connection for inclusion in national surveys.





**Hansa Bhargava, MD**  
**Emory University**

**HANSA BHARGAVA** is a board-certified physician in pediatric medicine. After undertaking Cognitively Based Compassion Training at Emory, she began facilitating workshops for healthcare students and physicians on compassion, resiliency, and burnout prevention. She penned *Building Happier Kids: Stress-Busting Tools for Parents* to provide actionable tools to support children’s mental health. She then transitioned to Medscape, as chief medical officer. Hansa has held leadership roles with the American Academy of Pediatrics, is on the advisory board for Christopher Wolf Crusade, an advisor for MI 10, and a member of the Digital Therapeutics Alliance. Hansa earned her medical degree from the University of Toronto and completed her residency at Toronto’s Hospital for Sick Children.



**Luay Sami, BA**  
**Clarkston Community Center**

**LUAY SAMI** began his career with the Ministry of Culture in Baghdad, where he represented Iraq on the global stage. Now serving as Executive Director at the Clarkston Community Center, Sami plays a key role in promoting inclusivity and vibrancy within the center. As a principal advisor to the Board, he helps shape organizational goals and leads the executive team in building connections across diverse communities through engaging programs.



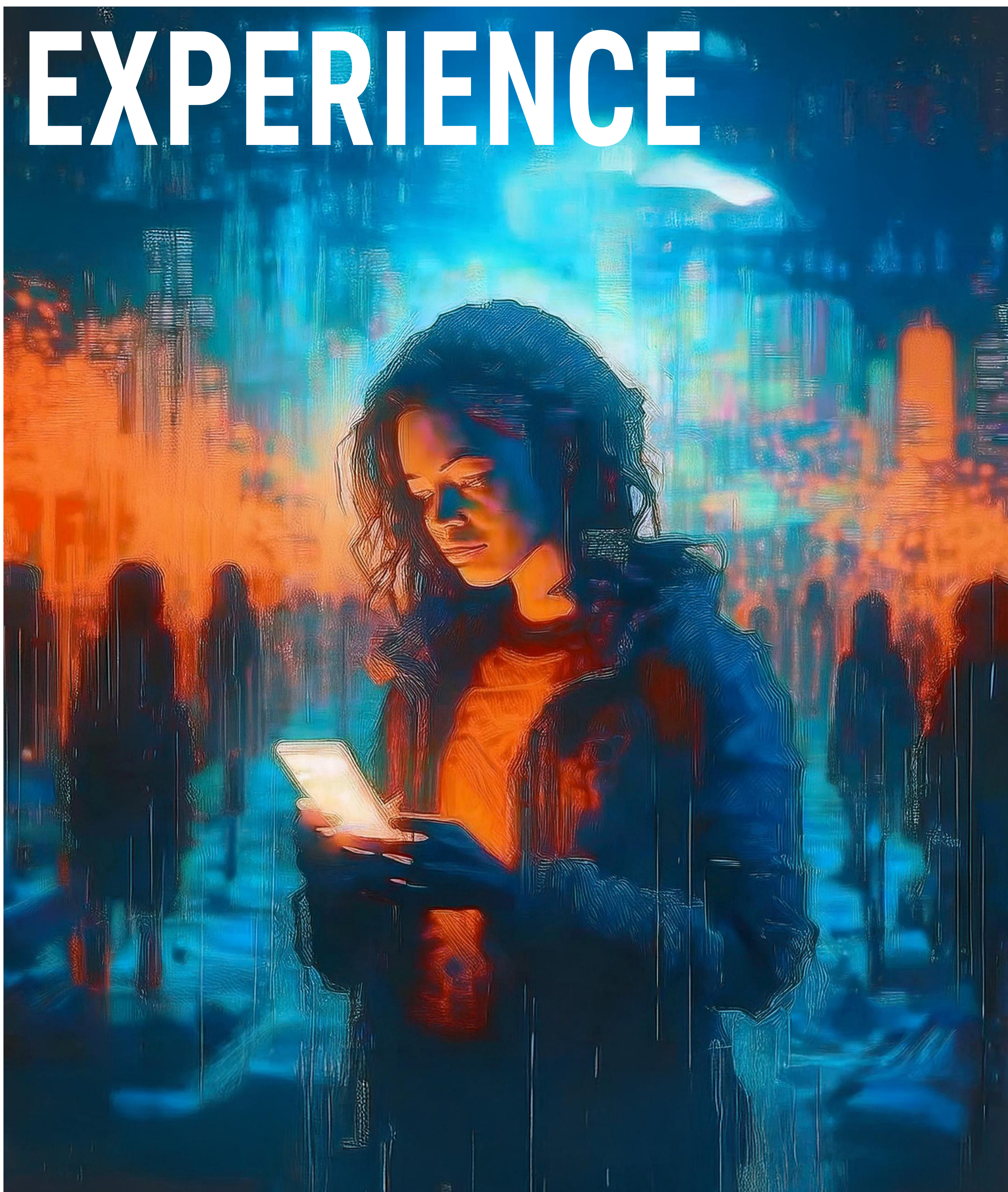
**Briana Woods-Jaeger, PhD**  
**Emory University**

**BRIANA WOODS-JAEGER** is an Associate Professor and Vice Chair for Equity and Engagement in the Department of Behavioral, Social, and Health Education Sciences and Associate Director of the Injury Prevention Research Center at Emory University. She is a Licensed Clinical Psychologist specializing in culturally affirming approaches to care and systems-level interventions to address trauma that center cultural humility. Dr. Woods-Jaeger’s research examines social and structural drivers of health inequities associated with trauma and earlyadversity and culturally responsive, strengths-based solutions to these inequities. She is currently a Principal Investigator on research projects supported by the NIH, CDC, PCORI, and William T. Grant Foundation focused on partnering with communities to identify ways to prevent violence and support different systems in responding to the needs of trauma-exposed youth and families of color.

**THANK YOU**  
**TO OUR JUDGES**



# SHARE YOUR EXPERIENCE



## CONNECT WITH US

Share competition highlights using [#LonelinessEpidemic](#) and [#SocialConnection](#)



EMORY  
UNIVERSITY

Emory Global Health Institute